

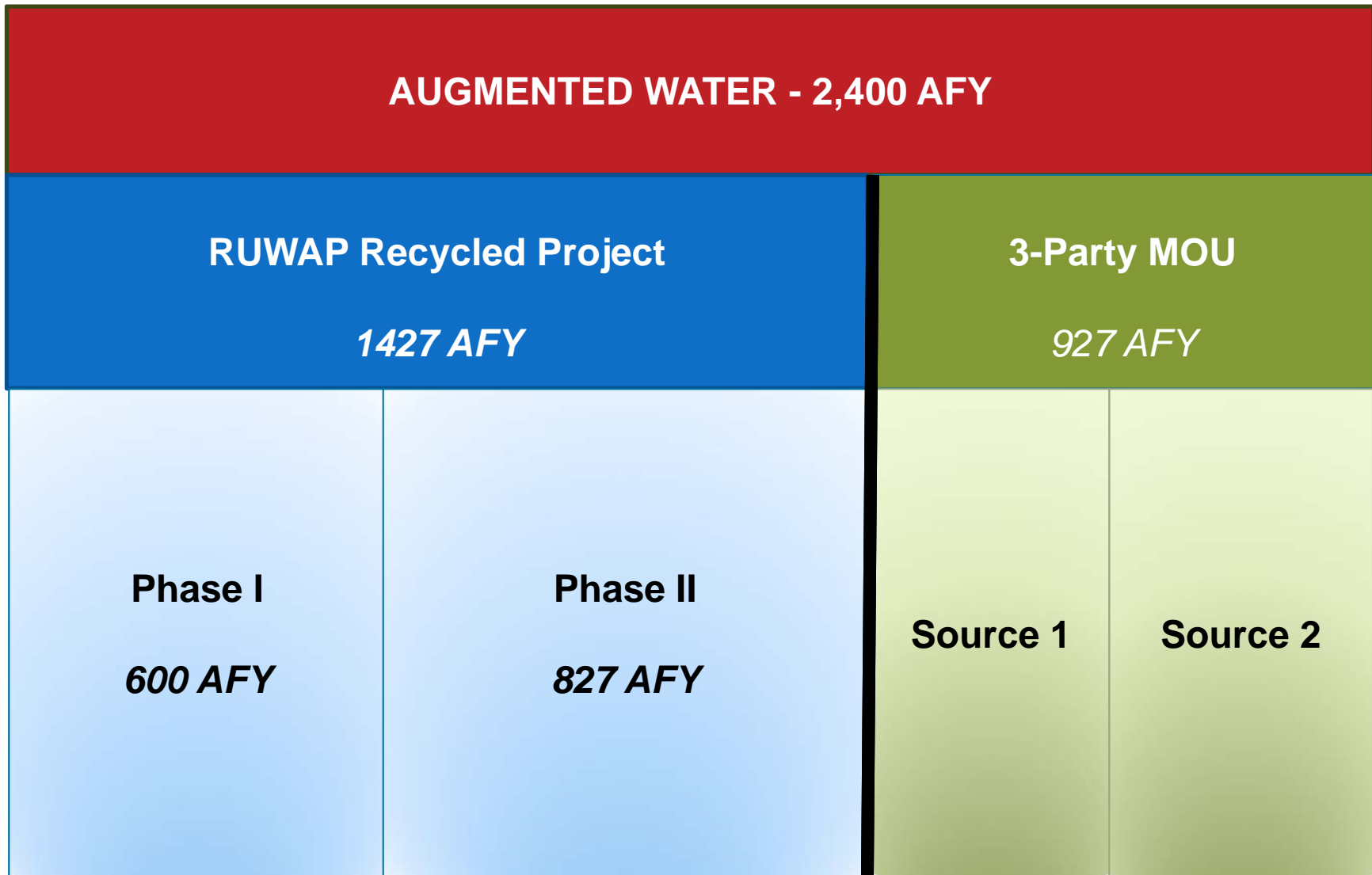
ARMSTRONG RANCH & 3-PARTY MOU

Securing New Water Sources and Protecting Our Primary Source - Groundwater
Marina Coast Water District
Michael Wegley, District Engineer

3-PARTY MOU

- ✘ Fort Ord Reuse Authority Allocated 2,400 AFY of Augmented Water To Land Use Jurisdictions
- ✘ The Land Use Jurisdictions are Marina, Seaside, Monterey (City and County), Del Rey Oaks, CSUMB, UCMBEST, & State Parks

Block Diagram



MCWD GOALS



FORA
Augmentation

RUWAP RW
& Additional
Water Sources

Diverse And
Secure Water
Portfolio

MCWD WATER SUPPLY GOALS

Groundwater Sustainability

- Protecting MCWD's Groundwater Supply to meet future demands

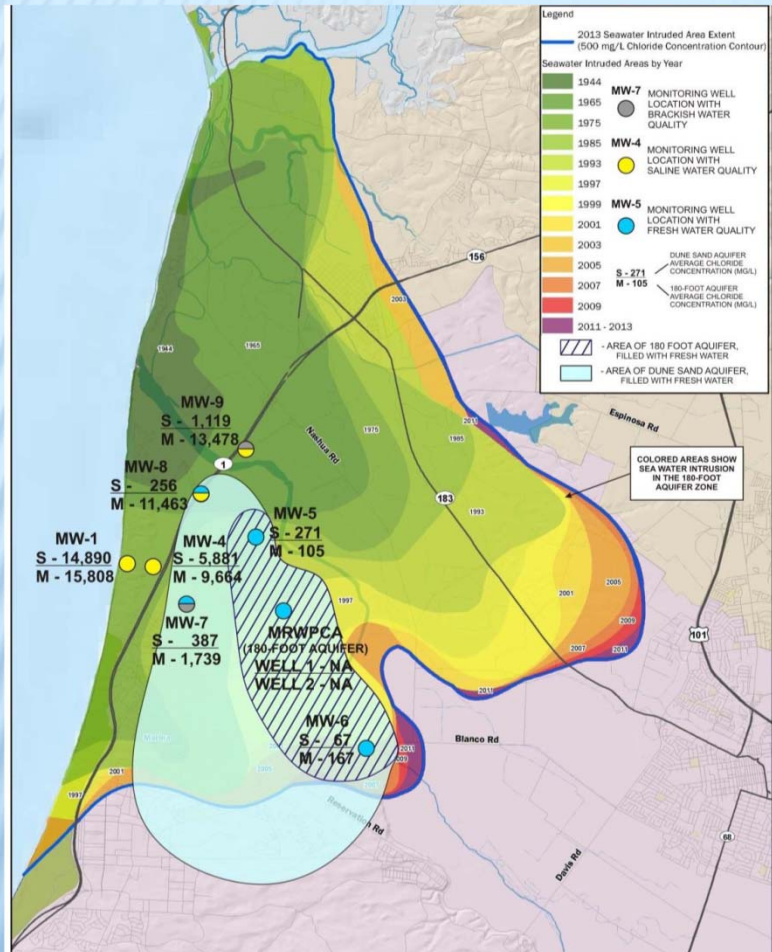
Water Quality

- Seawater Intrusion

Water Rights

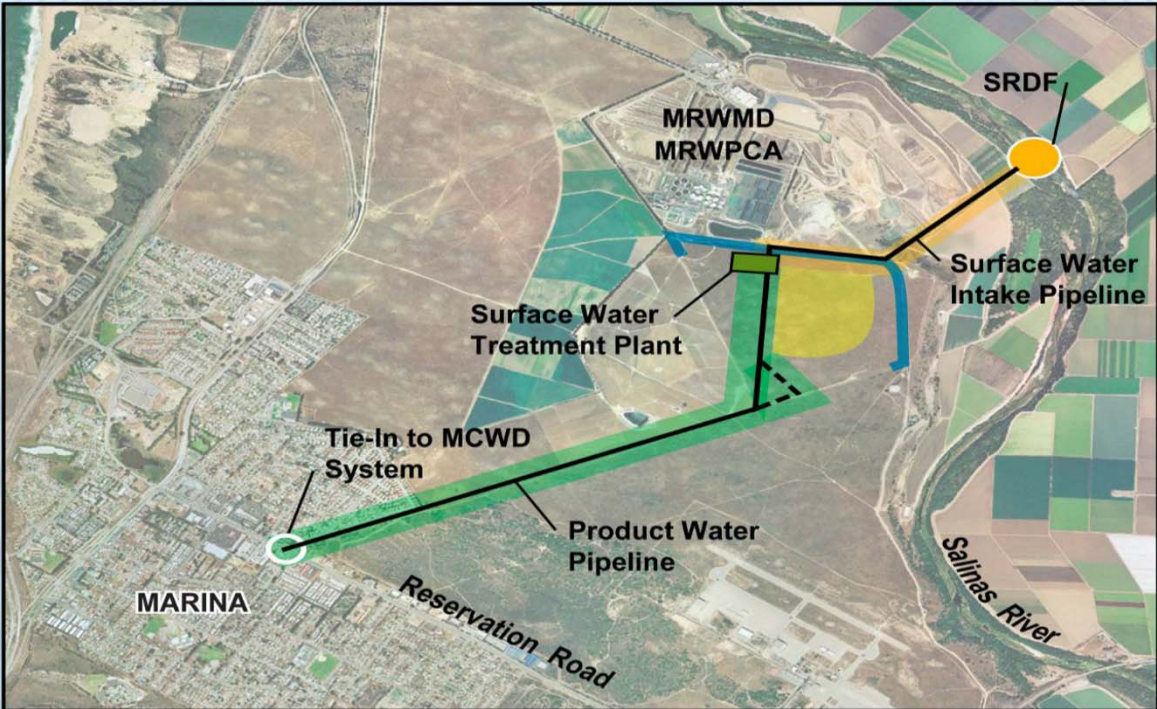
- Groundwater
- Surface Water
- Wastewater

URBAN WATER MANAGEMENT PLAN



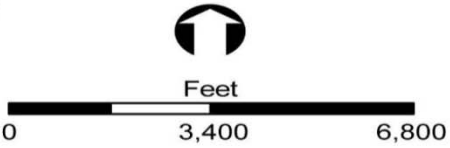
- Sea Water Intrusion
- Fresh Water Plume

SALINAS RIVER SURFACE WATER PROJECT



Legend

- SRDF** Salinas River Diversion Facility
- MRWPCA** Monterey Regional Water Pollution Control Agency
- MRWMD** Monterey Regional Waste Management District
- Preliminary Pipeline Alignment
- - - - - Alternative Alignments
- Potential Pipeline Corridor
- Potential Locations for Wells and Pipelines
- Facilities Shared with SVWP (currently being implemented)
- Slurry Wall



CONFLUENCE OF EVENTS



GROUNDWATER RECHARGE



Review body of
previous work

Present feasibility,
benefits, and issues
of Armstrong Ranch

Erler & Kalinowski, Inc – Engineers and Scientists

ARMSTRONG RANCH SURFACE WATER PROJECT

✖ Questions?